

Kiwi Express (a division of Messenger Services Limited)

Year 1 of 3 year certificate period

Kiwi Express (a division of Messenger Services Limited) meets the requirements of carboNZero^{Cert™} certification having measured its greenhouse gas emissions in accordance with the requirements of ISO 14064-1:2006 including additional life cycle emissions associated with the selected freight services, committed to managing and reducing its emissions and neutralised its remaining unavoidable emissions through the cancellation of an appropriate number of verified carbon credits in respect of its organisation and selected services including vehicle fleet, contracted freight, and office operations.



Introduction¹ – Kiwi Express is a nationwide courier business, offering a range of courier services - around town deliveries, same day road runs or flights, nationwide deliveries and international courier. Kiwi Express recognises that its core business is reliant on transportation to service its customers and is therefore an emissions-intensive organisation. We recognise we must play a part in protecting and improving the environment.

Boundary – Figure 1 below shows the organisational structure used for describing the organisation’s greenhouse gas (GHG) emissions inventory, and what business units were included in the inventory in the context of the entire organisational profile. The parts of the structure (business units) in blue have been identified as being within this emissions inventory. Business units excluded from the inventory are shown in green.

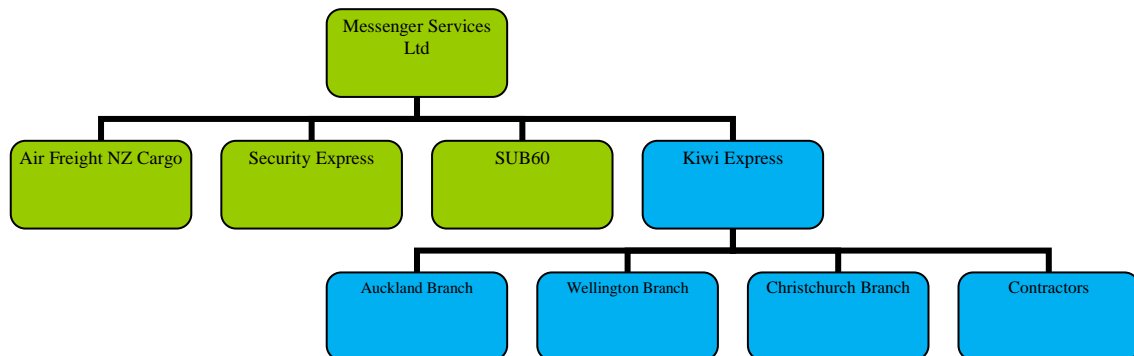


Figure 1: Organisational structure showing business units included and excluded.

Consolidation approach – The operational control consolidation approach has been used to account for operational emissions with reference to the methodology described in the GHG Protocol and ISO 14064-1:2006 standards.

Base year – 01/07/2010 to 30/06/2011

¹**Disclaimer:** This Disclosure Statement is a summary of the verified information considered for certification and the certification decision. It should not be taken to represent the full submission for certification. Whilst every effort has been made to ensure that the information in this Disclosure Statement is accurate and complete, carboNZero Holdings Ltd does not, to the maximum extent permitted by law, give any warranty or guarantee relating to the accuracy or reliability of the information.

Kiwi Express (a division of Messenger Services Limited)

Year 1 of 3 year certificate period

Measurement period – 01/07/2010 to 30/06/2011

Emissions source inclusions – The operational GHG emissions for the organisation by emissions source are shown in Figure 2 below.

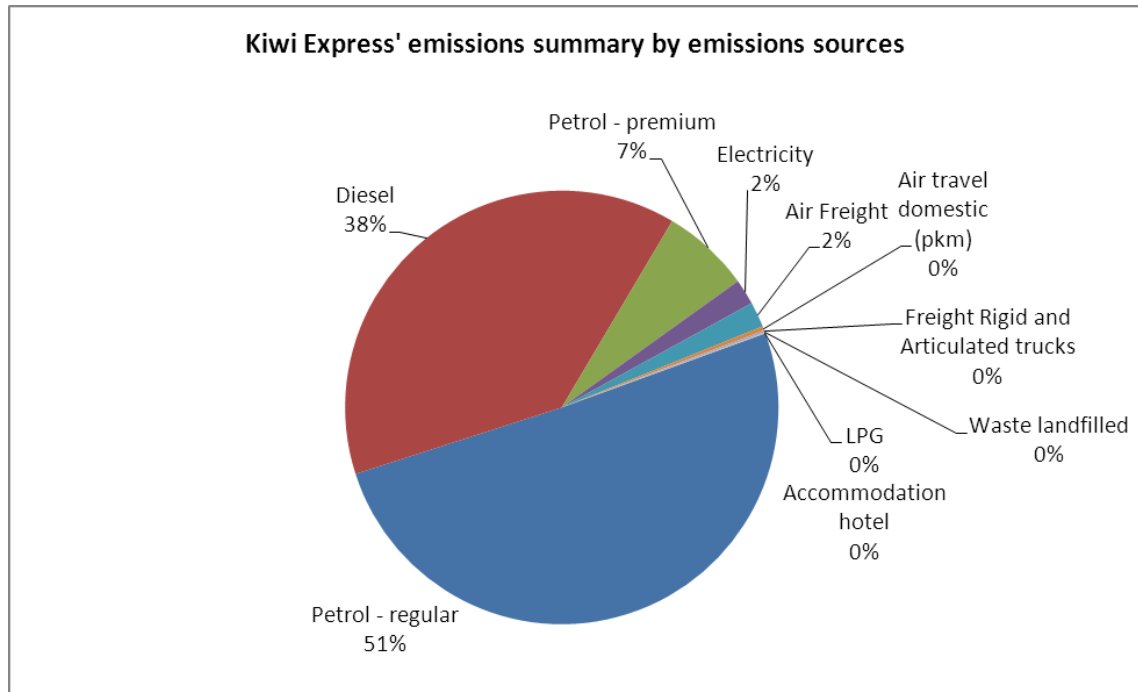


Figure 2: GHG emissions by emissions source.

Emissions as tonnes of carbon dioxide equivalents (tCO₂e) for this period were:

Scope 1: 28.07 tCO₂e

Scope 2: 16.56 tCO₂e

Scope 3: 822.66 tCO₂e

Total: 867.29 tCO₂e

Emissions source exclusions – The following emissions sources were excluded from the inventory for this measurement period:

- Fuel for 2 employees with company cars were excluded as they solely work for Security Express and Air Freight NZ Cargo, therefore is outside of measurement boundary

Emissions reduction commitments – A GHG emissions management plan and reduction targets have been developed.

- Reduce contractors' fuel use by 2%
- Reduce company vehicle fuel use by 2%
- Reduce waste by 2%

Summary of carboNZero certification:



Kiwi Express (a division of Messenger Services Limited)

Year 1 of 3 year certificate period

Offset – 469 tonnes CO₂e from WINDFARM (Tararua TrustPower). Serial numbers 344396-344864 have been cancelled (or equivalent) on Markit Environmental Registry.

370 tonnes CO₂e from PNCC Landfill Gas. Serial numbers 209779-210148 have been cancelled (or equivalent) on Markit Environmental Registry.

29 tonnes CO₂e from EBEX21 Native Forest Regeneration Projects (PFSI Compliance). Serial numbers 807296-807324 have been cancelled (or equivalent) on the New Zealand Emissions Unit Register.

Verified by – Green Fox Limited

Data quality score – Fair

Threshold of materiality – Excluded emissions do not exceed 5% of the total footprint for organisation stated.

Level of assurance – Limited

Certification status – carboNZero certified organisation and service

Certificate number – 2012020J - Year 1

Valid until – 26 March 2015

32 Botha Road, Penrose, Auckland, New Zealand. Telephone: +64 (0) 9 589 4100.
Email: andrea.fairclough@messenger.co.nz Web: www.kiwiexpress.co.nz